



# ALLERG-O-LIQ-SYSTEM

**fully automated** Walk-Away-System for the allergy *in-vitro* diagnosis with **liquid allergens** and open platform for ELISA's



## **Specifications for *in-vitro* allergy diagnostics**

- Quantitative determination of specific IgE and Total IgE in one Test-Run
- 6 point calibration (WHO-calibrated)
- Up to 186 determinations per Test-Run

## **Specifications for ELISA applications**

- Up to eight parameters per Test-Run
- Flexible set-up

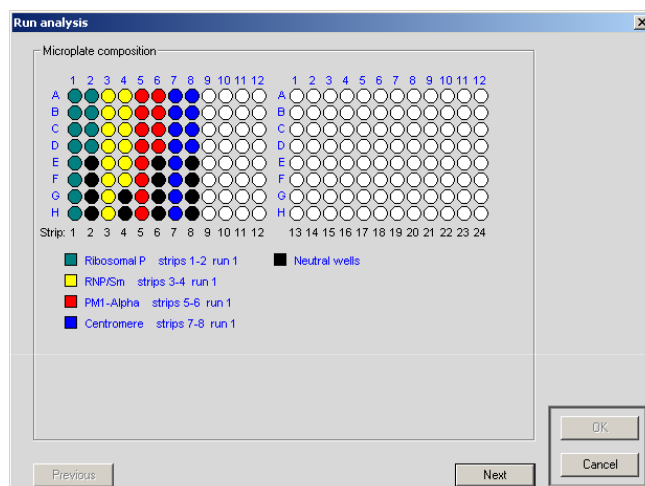
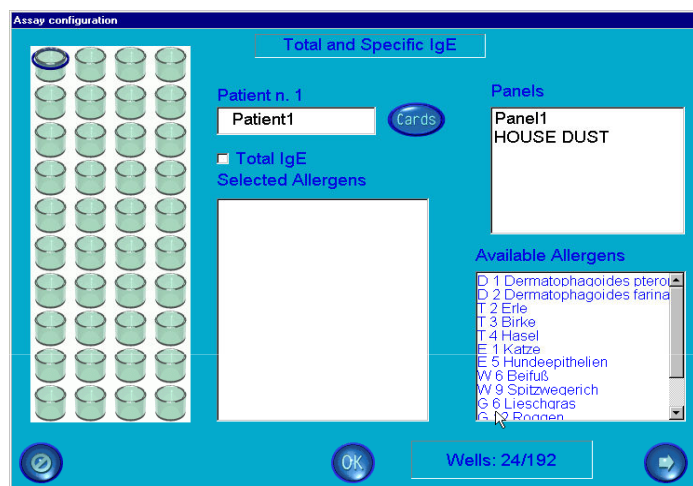
## **Advantages**

- User-friendly Software (compatible with: Windows98/2000/XP)
- Short hands-on time
- Fully automated
- CE marked
- High precision



## Technical Data

<b>Automat:</b>	AP22 / AP22 Speedy (DAS, Italy)
<b>Throughput:</b>	Dispense time for 8 samples (100 µL each): less than 1.5 minutes (AP22 Speedy) for each 8-well strip, including needle washing time with 1 mL washing solution between each sample pipetting
<b>Dispense volume:</b>	10 µl – 1 mL with steps of 1 µL, accuracy ± 2% at 100 µL
<b>Needle:</b>	Detects the liquid surface
<b>Plate incubation:</b>	At room temperature
<b>Capacity</b>	2 microtiter plates, 96 wells each
<b>Photometer:</b>	8 separate photometric channels for reading one microtiter strip monochromatically or bichromatically
<b>Standard filter:</b>	450 and 630 nm
<b>Accuracy:</b>	± 1% of 0.000 to 1.500 OD absorbance, measuring range from 0.000 to 3.000 OD
<b>Calculation modes:</b>	Absorbance, cut-off formula, single-point calibration, standard curves: multi-point (max. 10 points, linear regression and log/logit)
<b>PC interface:</b>	RS-232 serial interface
<b>Elect. connections:</b>	220 or 110 V, 50 – 60 Hz, 500 W
<b>Dimensions:</b>	cm: 79 x 61 x 60 (width x depth x height)
<b>Weight:</b>	72 kg
<b>Requirements to the PC:</b>	Windows-compatible computer
<b>System program:</b>	Albatros + ELISA



**Figure 1**

The user interface of the Albatros Software (left picture) and ELISA Software (right picture) enables easy assay configuration and performance from sample loading to reporting.

### Related Products for allergy *in-vitro* diagnostic

- Total IgE ALLERG-O-LIQ **[REF] 08101FL**
- Specific IgE REAST **[REF] 0520960FL**
- Reference system **[REF] 07050FL**
- Allergens **[REF] Code-FL**

### Autoimmune parameter

- AI-Line **[REF] 250xx**